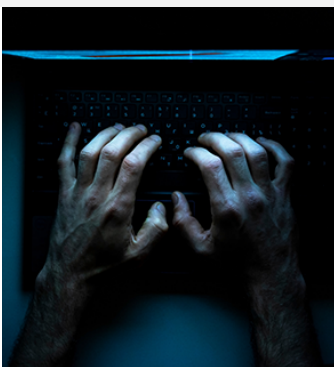


Inside a Ransomware Incident

A single mistake left a door open for attackers. There are many things you can do to protect yourself against cyberattacks - but if you still don't do the basics, then it's easy pickings for criminals.

[Read More](#)



5 Compatible & Alternative Methods to Passwords

Finding alternatives to passwords can improve employee efficiency.

[Read More](#)

Up to 100 Lenovo Laptops Are a Security Risk

One hundred different Lenovo consumer laptop computers contain firmware-level vulnerabilities, and several won't be patched.

[Read More](#)



Hardening Physical Security to Protect Against Cyberattacks

Security leaders can take seven steps to develop a coordinated strategy to harden physical security systems that are at risk of cyberattacks.

[Read More](#)

3 Best Practices to Enhance Your Organization's Cloud Security

To be effective, cloud security operations need to unify detection, investigation, and response and ensure consistency across the processes.

[Read More](#)

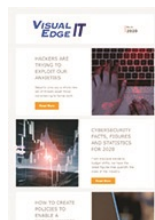


MISSED OUR LAST NEWSLETTER?

In case you've missed any previous editions of *This is IT*, you can view them online at Visual Edge's website on the Resources page.

You'll also find other helpful tools such as eGuides, checklists, videos and more.

[Check it out!](#)



COST CALCULATOR

The cost of a technology outage can cripple a business. Use this [Recovery and Downtime Cost Calculator](#) to see a general analysis of what an outage could mean to your business.



Visual Edge IT
6050 Corporate Way, Indianapolis, IN, 46278
Phone: 866-863-2266